

AR Data

**AR Advisory Committee Meeting
June 5, 2026**

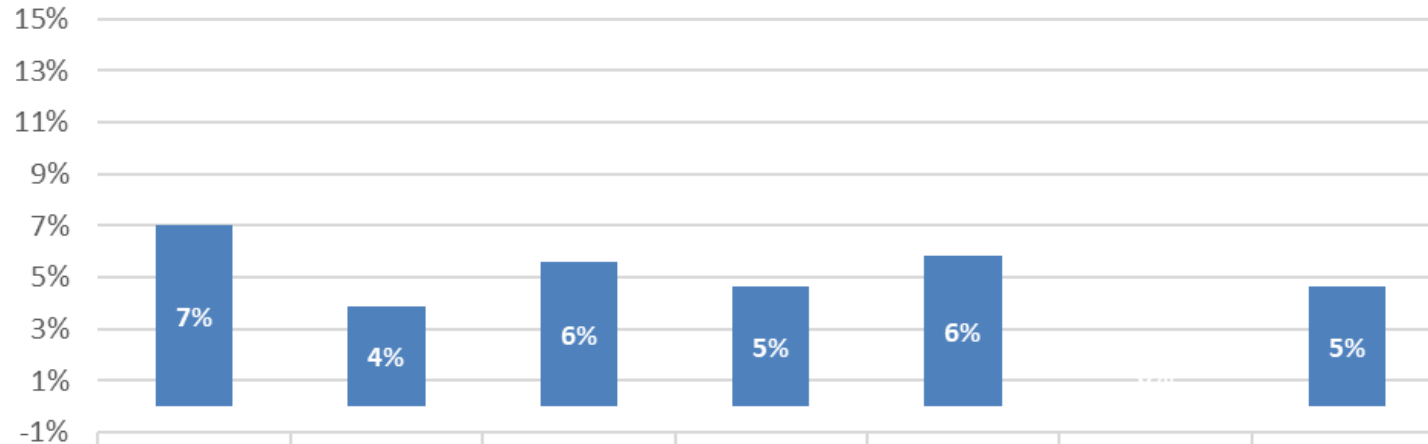
NEBRASKA

Good Life. Great Mission.

DEPT. OF HEALTH AND HUMAN SERVICES

Helping People Live Better Lives.

How Many Families Served By Alternative Response had a Track Change to Traditional Response?



	Central	Eastern	Northern	Southeast	Western	Tribal	State
■ Percentage	7%	4%	6%	5%	6%	0%	5%
Numerator	8	20	8	10	6	0	52
Denominator	114	514	143	215	103	31	1120

Open and Closed Program Cases.

Reasons for Mandatory Response Reassignment (Track Change):

- 1) a safety threat is present that cannot be managed through an in-home safety plan (Note: Use of an Approved Informal Living Arrangement is not approved for AR); or
- 2) DCFS cannot assess child safety; or
- 3) Law Enforcement notifies the Department that they will continue investigating the child abuse or neglect Intake Accepted for Assessment; or
- 4) the Caretaker receiving Alternative Response requests Traditional Response; or
- 5) the Department learns a Household Member allegedly caused the death of a child.

Data is from the most recent 12 months.

*Data Source: Pilot County AR Eligible Intakes

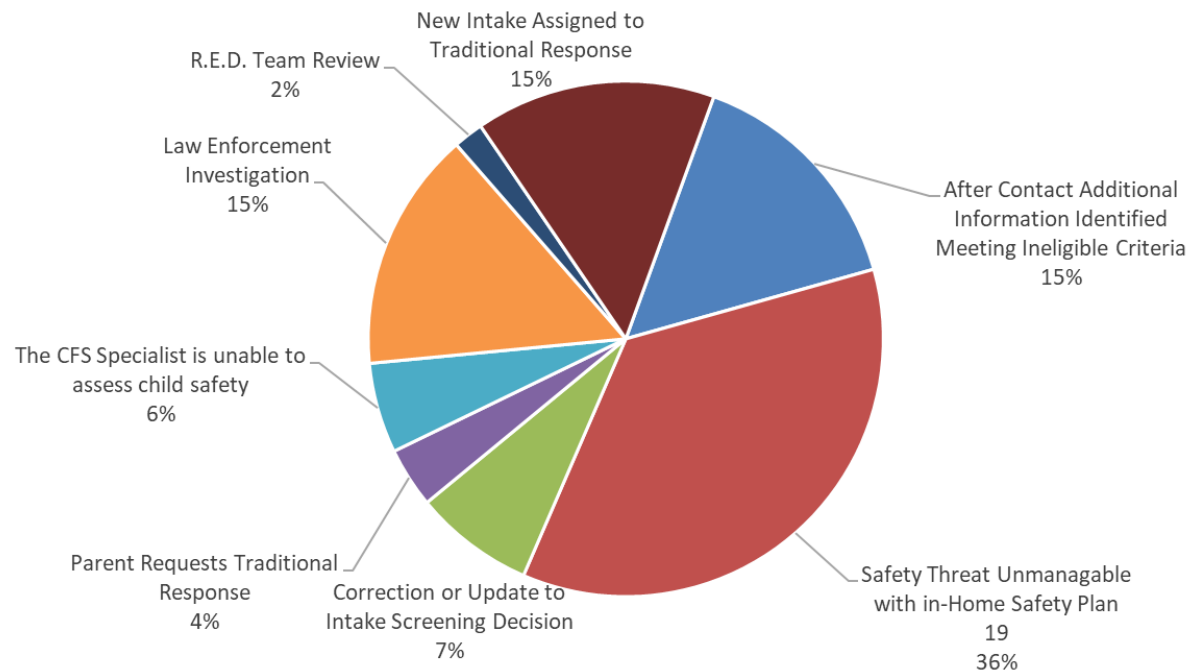
NEBRASKA

Good Life. Great Mission.

DEPT. OF HEALTH AND HUMAN SERVICES

Helping People Live Better Lives.

What are the Reasons for Changing from AR to TR?



Open and Closed Program Cases.

Reasons for Mandatory Response Reassignment (Track Change):

- 1) a safety threat is present that cannot be managed through an in-home safety plan (Note: Use of an Approved Informal Living Arrangement is not approved for AR); or
- 2) DCFS cannot assess child safety; or
- 3) Law Enforcement notifies the Department that they will continue investigating the child abuse or neglect Intake Accepted for Assessment; or
- 4) the Caretaker receiving Alternative Response requests Traditional Response; or
- 5) the Department learns a Household Member allegedly caused the death of a child.

Data is from the most recent 12 months.
 *Data Source: Pilot County AR Eligible Intakes

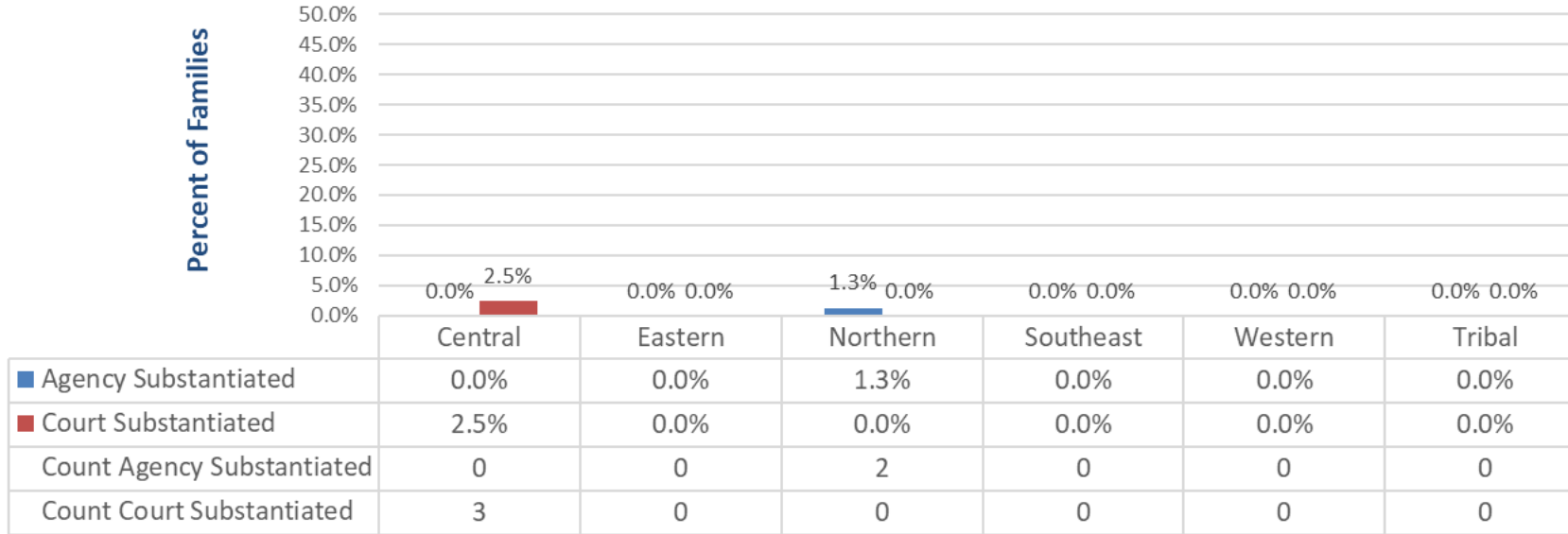
NEBRASKA

Good Life. Great Mission.

DEPT. OF HEALTH AND HUMAN SERVICES

Helping People Live Better Lives.

What Percent of Families Eligible for Alternative Response Resulted in a Substantiated Finding by Service Area?



Central Registry determination derived from a substantiated intake.

The denominator for this chart includes all AR eligible families (AR track, TR track, and track changed from AR to TR).

Only Intakes that were initially assigned to TR or track changed to TR that resulted in a substantiated finding will be reflected in the numerator/percentage

***This data is from cases with an intake received date within the most recent 12 months.**

*Data Source: AR Eligible Allegations Crosstab

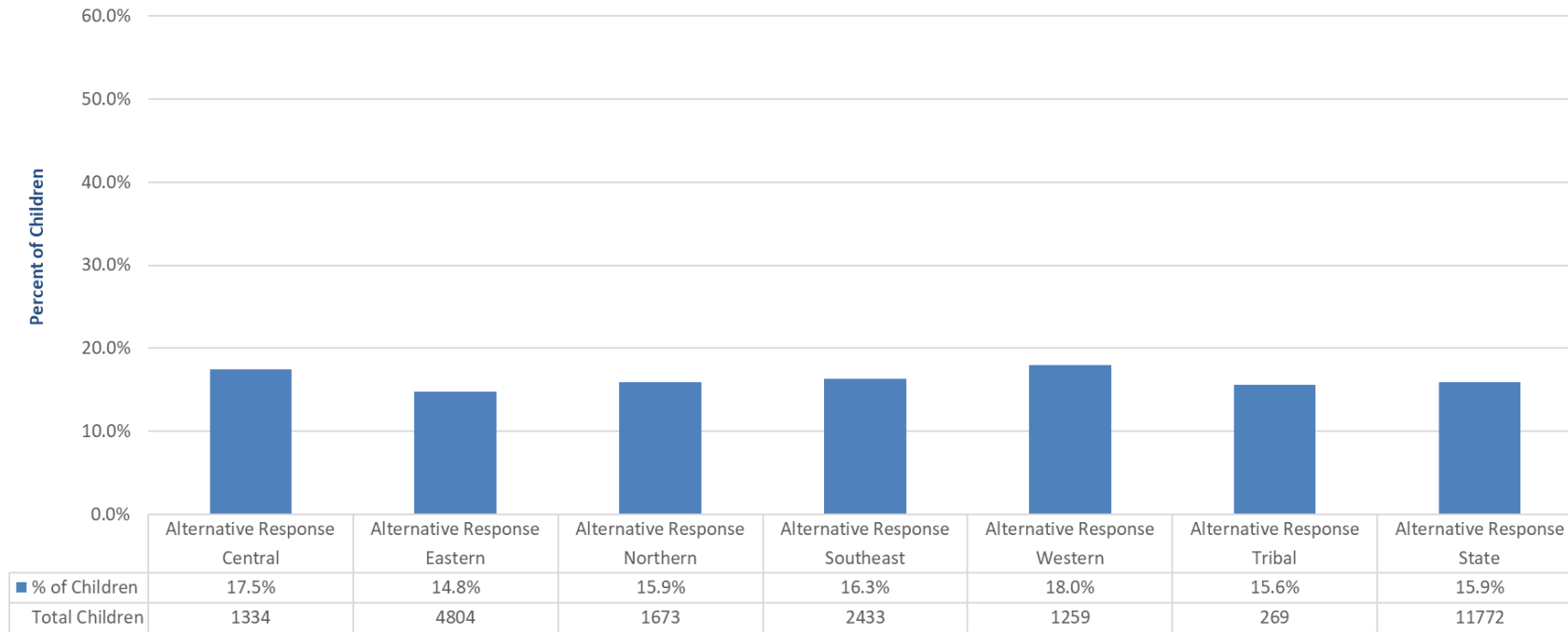
NEBRASKA

Good Life. Great Mission.

DEPT. OF HEALTH AND HUMAN SERVICES

Helping People Live Better Lives.

What Percent of Children Eligible for Alternative Response had a Subsequent Accepted Intake within 12 Months?



Federal measure required for Title IV-E Waiver Demonstration Project (cases may be open or closed)

Families that change track are excluded.

Includes only children in AR Eligible Intakes in the last 36 months.

**Data Source: Pilot County AR Eligible Youth w Measures*

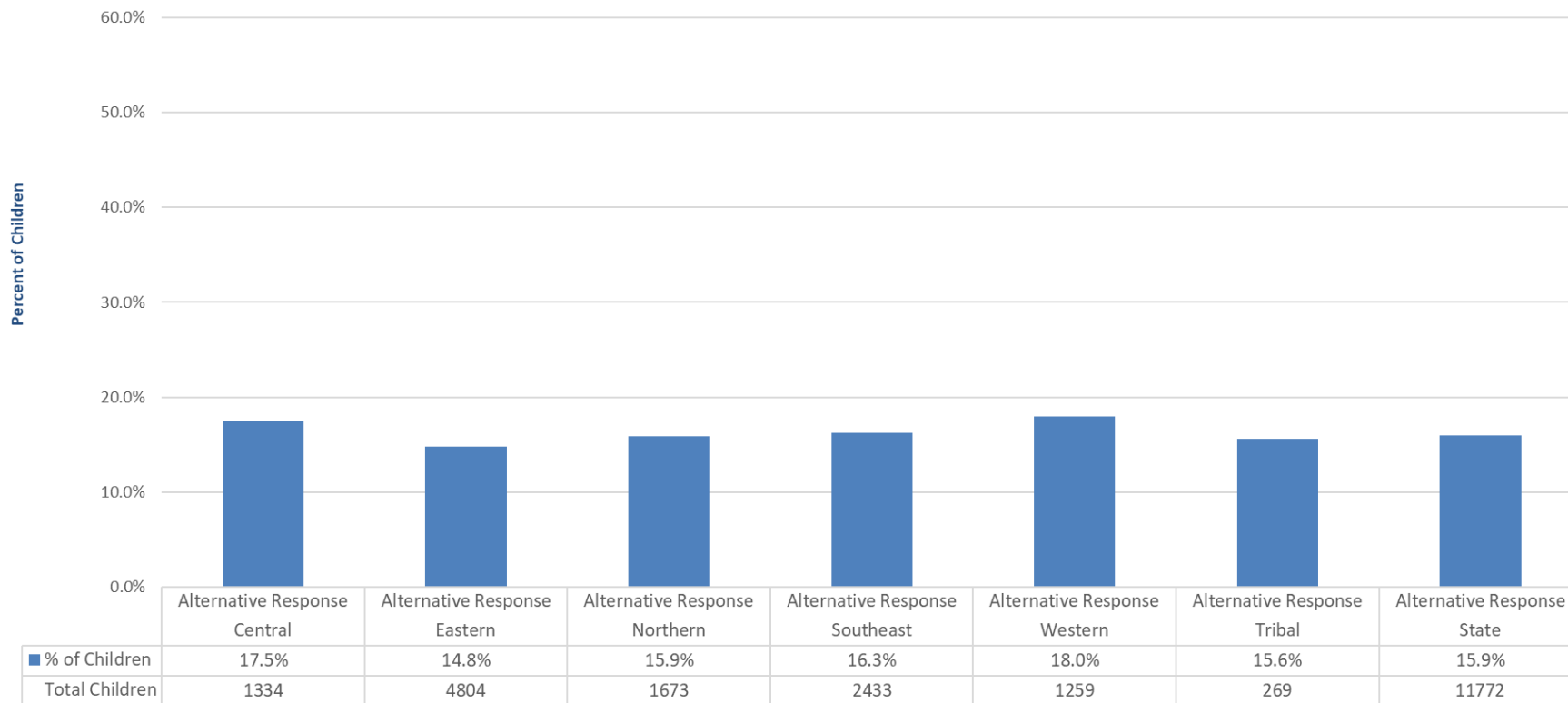
NEBRASKA

Good Life. Great Mission.

DEPT. OF HEALTH AND HUMAN SERVICES

Helping People Live Better Lives.

What Percent of Children Eligible for Alternative Response had a Subsequent Accepted Intake within 24 Months?



Federal measure required for Title IV-E Waiver Demonstration Project (cases may be open or closed)
 Families that change track are excluded.
 Includes only children in AR Eligible Intakes in the last 36 months.

*Data Source: Pilot County AR Eligible Youth w Measures

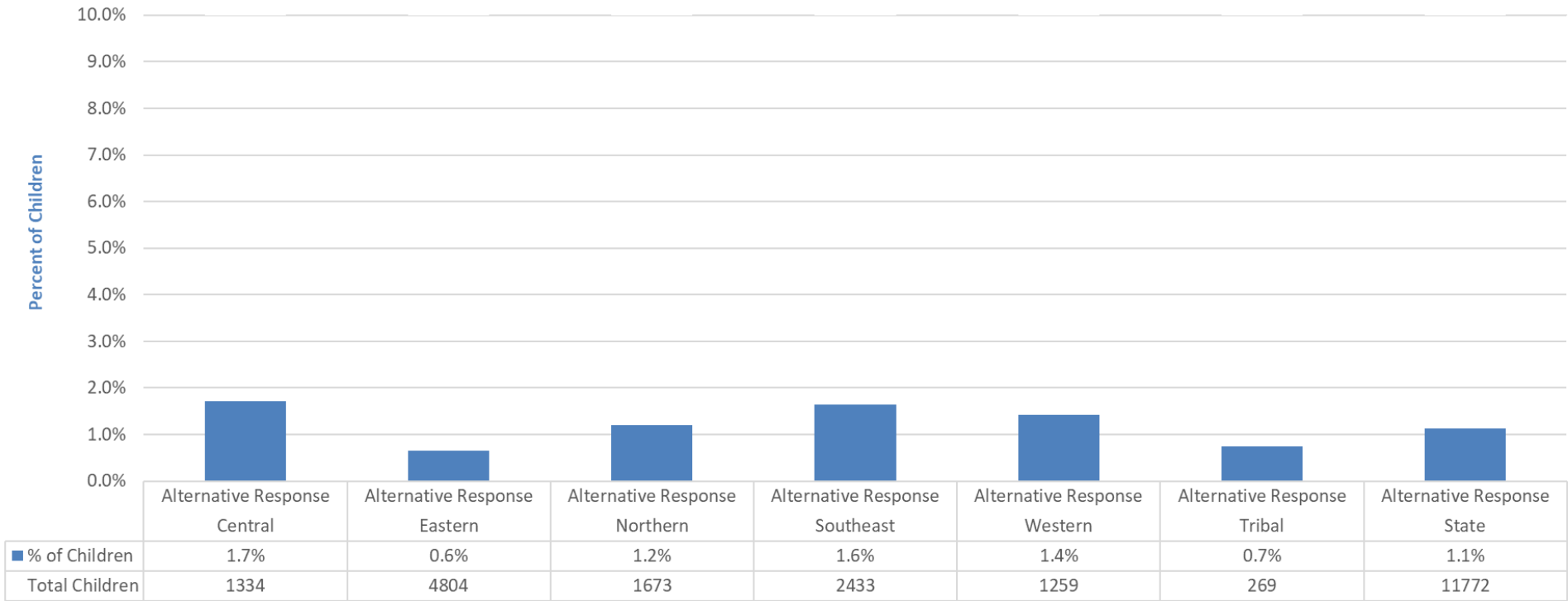
NEBRASKA

Good Life. Great Mission.

DEPT. OF HEALTH AND HUMAN SERVICES

Helping People Live Better Lives.

What Percent of Children Eligible for Alternative Response had a Subsequent Substantiated Intake within 12 Months?



Federal measure required for Title IV-E Waiver Demonstration Project (cases may be open or closed)
 Families that change track are excluded.
 Includes only children in AR Eligible Intakes in the last 36 months.

*Data Source: Pilot County AR Eligible Youth w Measures

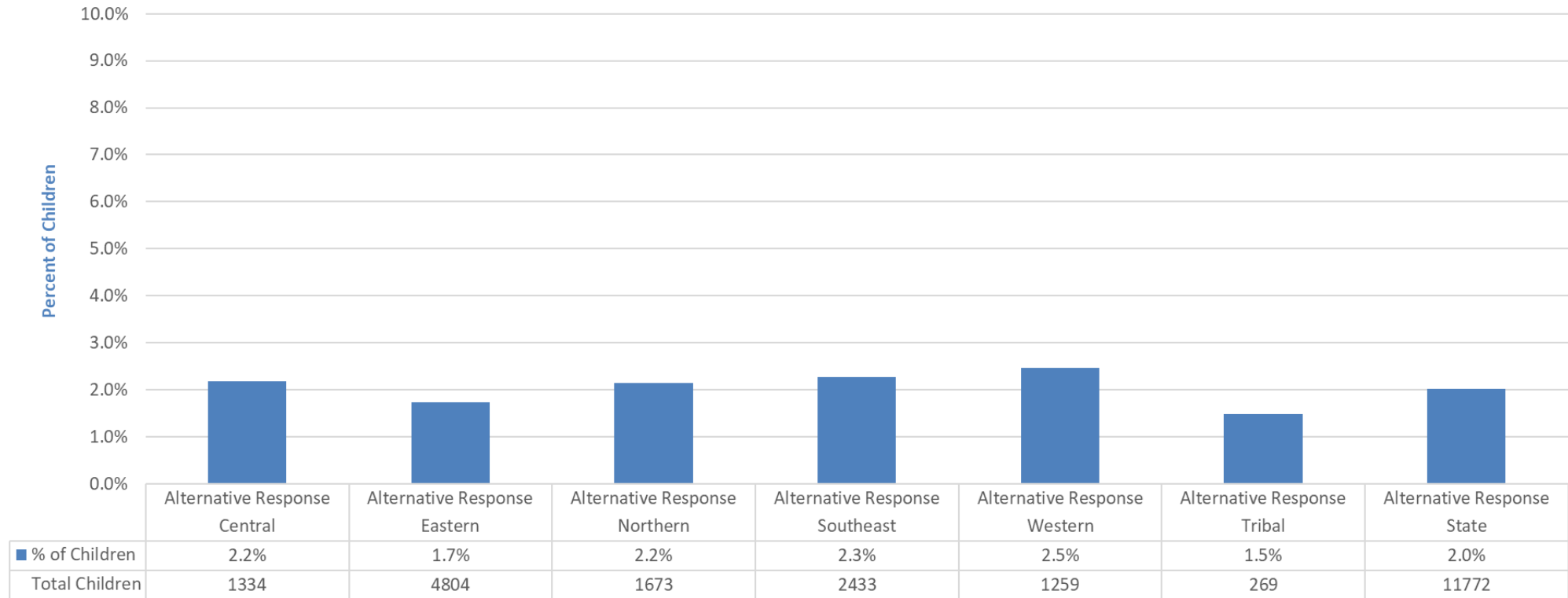
NEBRASKA

Good Life. Great Mission.

DEPT. OF HEALTH AND HUMAN SERVICES

Helping People Live Better Lives.

What Percent of Children Eligible for Alternative Response had a Subsequent Substantiated Intake within 24 Months?



NEBRASKA

Good Life. Great Mission.

DEPT. OF HEALTH AND HUMAN SERVICES

Federal measure required for Title IV-E Waiver Demonstration Project (cases may be open or closed)

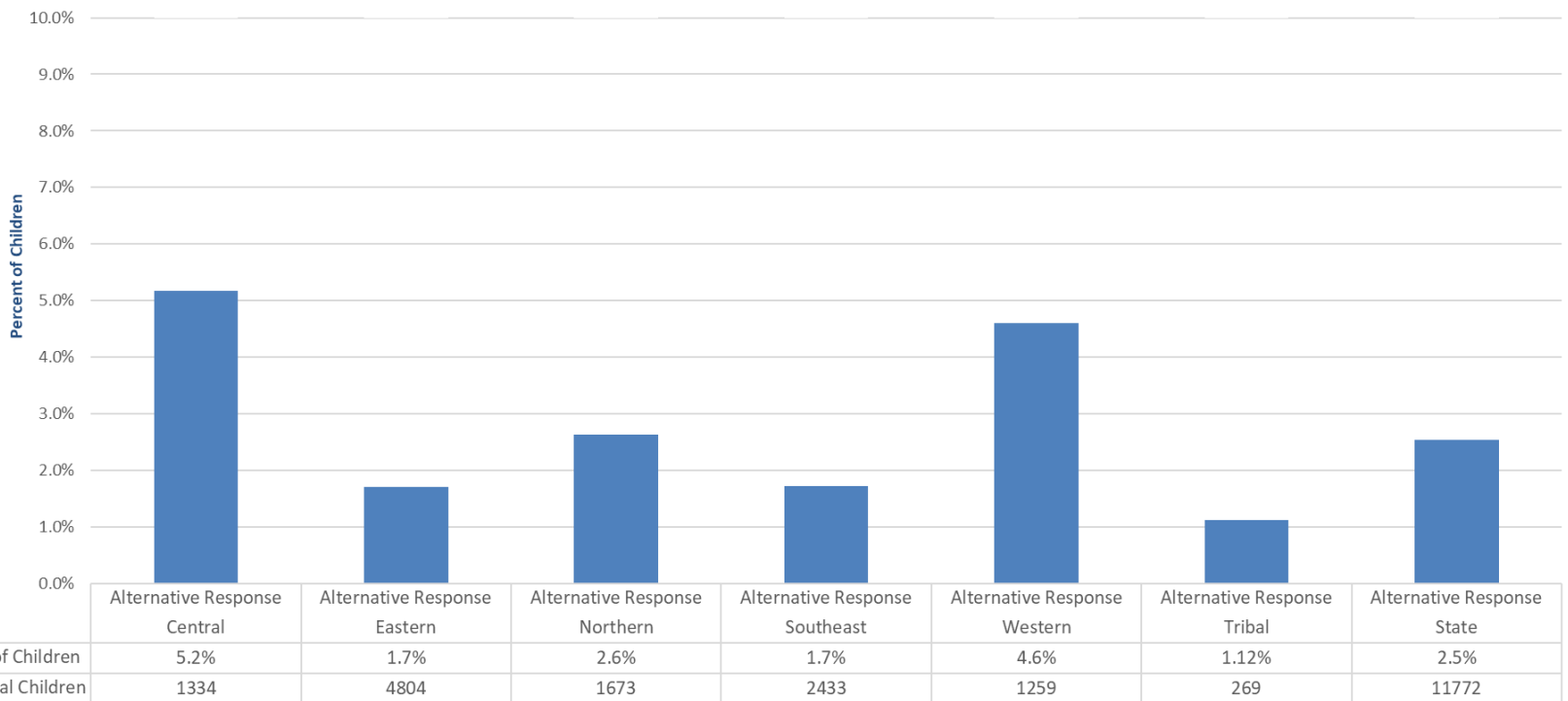
Families that change track are excluded.

Includes only children in AR Eligible Intakes in the last 36 months.

*Data Source: Pilot County AR Eligible Youth w Measures

Helping People Live Better Lives.

What Percent of Children Eligible for Alternative Response were Placed in Out of Home Care within 12 Months?



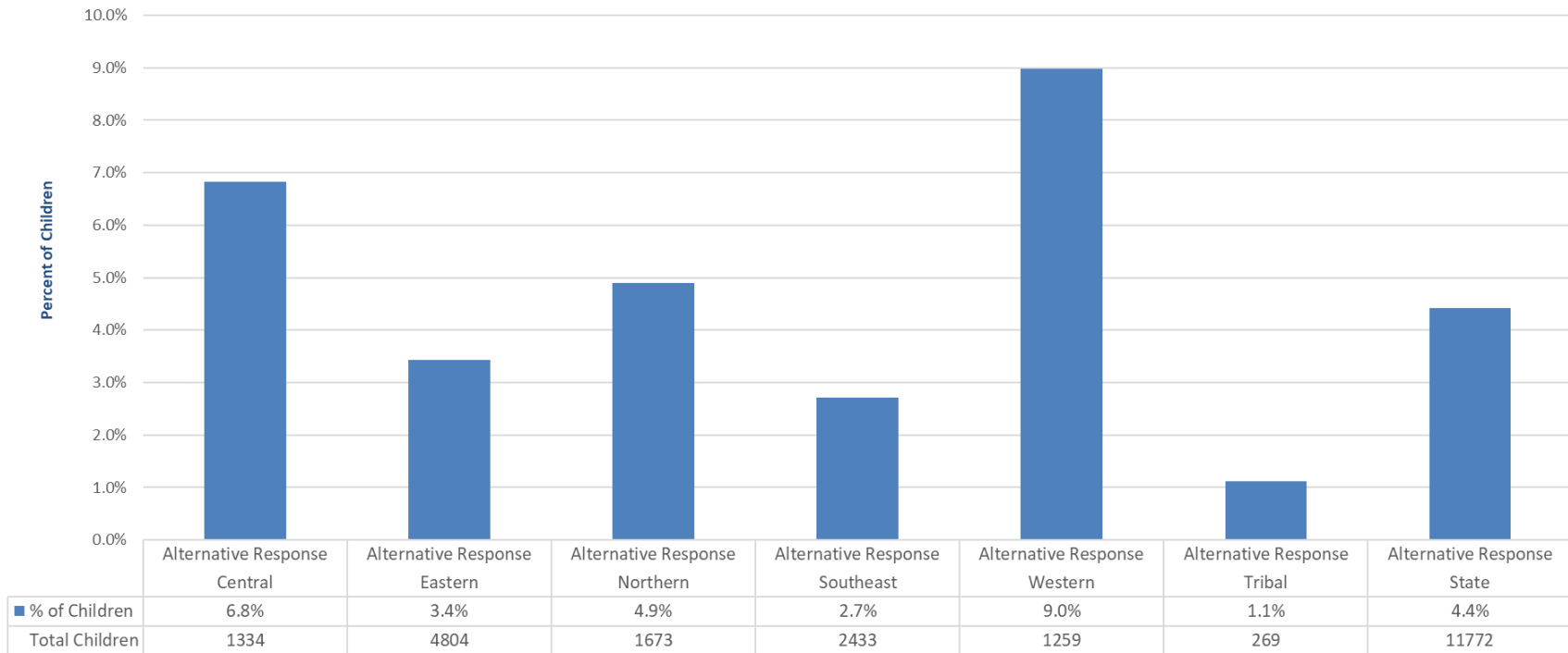
Federal measure required for Title IV-E Waiver Demonstration Project (cases may be open or closed)
 Families that change track are excluded.
 Out of Home Placement = Child(ren) removed from parent(s)
Includes only families in AR Eligible Intakes in the last 36 months.

*Data Source: Pilot County AR Eligible Youth w Measures



Helping People Live Better Lives.

What Percent of Children Eligible for Alternative Response were Placed in Out of Home Care within 24 Months?



Federal measure required for Title IV-E Waiver Demonstration Project (cases may be open or closed)

Families that change track are excluded.

Out of Home Placement = Child(ren) removed from parent(s)

Includes only families in AR Eligible Intakes in the last 36 months.

**Data Source: Pilot County AR Eligible Youth w Measures*

NEBRASKA

Good Life. Great Mission.

DEPT. OF HEALTH AND HUMAN SERVICES

Helping People Live Better Lives.